



Tips & Tricks

April 2007

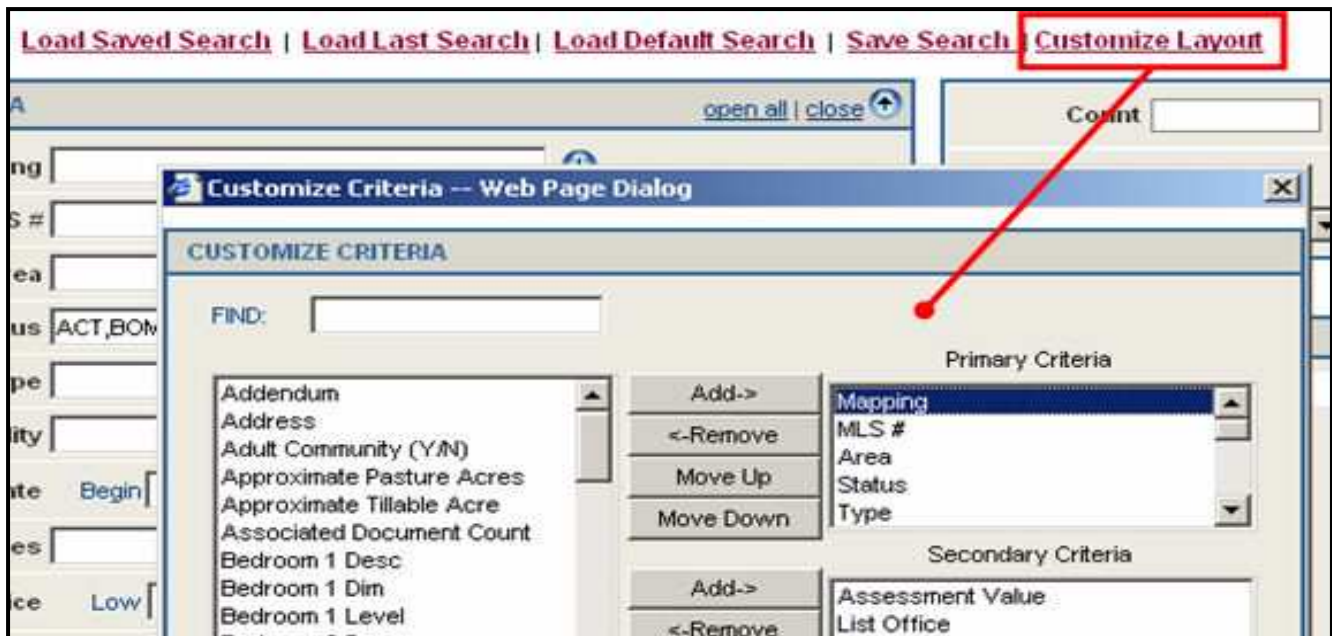
Steps for Searching Virtual Earth™ Maps in Paragon Online.

The Virtual Earth™ platform is Microsoft's next generation mapping and location service. It combines the MapPoint™ Web Service with exciting new innovations that include Bird's Eye, Satellite and Aerial Imagery, additional map styles (where available), increased usability as well as enhanced Map search functionality. Fidelity MLS is excited to offer you Virtual Earth™ which has become one of the leading-edge mapping solutions available on the market.

Paragon users will be able to utilize this feature rich mapping program from within Paragon in a variety of ways. You can search using the map, create a standard Map View, Virtual Earth View or Driving Directions from a constant point or caravan. Mapping is an option for Paragons' MLS Clients.

VIRTUAL EARTH™ SEARCH

Paragon provides a map search feature on the criteria page for all property class searches. If Mapping does not appear in your search criteria screen you may add it by clicking the Customize Layout link from the search screen. Select Mapping on the left side of the Customize Criteria dialog screen and click Add to include it in one of your criteria selection boxes.



Once you have added the mapping field to your search screen it will appear as a hyperlink. Selecting this hyperlink will launch the map search in a new pop-up window.

PRIMARY CRITERIA [open all](#) | [close](#)

Mapping [Click Here to Launch Map](#)

Area [open](#)

Status [open](#)

Type [open](#)

Municipality [open](#)

Price Low , 000 High , 000

Beds Min Max

Full Baths Min Max

Half Baths Min Max

Square Feet Min Max

Acres Min Max

Year Built Min Max

SECONDARY CRITERIA [open all](#) | [open](#)

ADVANCED CRITERIA [open all](#) | [open](#)

Search [Contacts](#) [CM](#)

- Property
- MLS # / Address / Tax / Multi-Class
- Hotsheet
- Auto Hotsheet - 10/9/2006
- Tour/Open House
- Property History
- Firm Inventory
- Mapping Search**
- Address Archive
- View Saved Property Searches
- View Favorites
- PinPoint
- QuickPoint

You can also go directly to the Virtual Earth™ search screen by selecting Mapping Search from the Search drop-down menu.

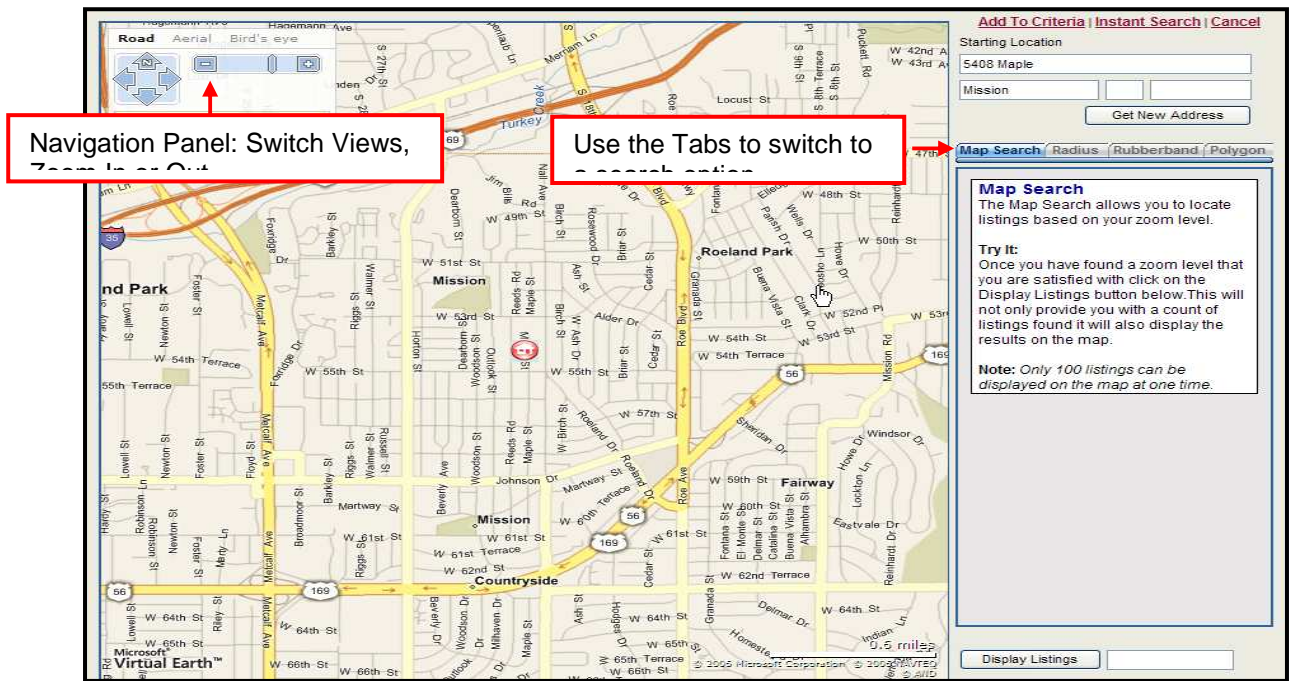
Note: when selecting this option Paragon will automatically launch a **multi-class** map search window.

Starting Location

When the mapping search window is launched the map will display the default address in the center of the map. The default address is the user's Office address. However, the user can specify a different starting address within **User Preferences**. A different address can also be entered in the box shown below. If unsure of an exact address simply enter a city or zip code to get to the area desired. Click on the Get New address button and the map will refresh with the new address in the center of the map. A small home icon will designate the address found.

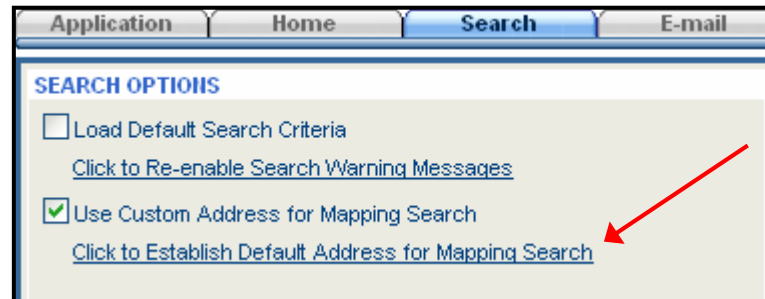
Starting Location

[Get New Address](#)



To Change the default starting location:

Navigate to Preferences > User > Search Tab. Check the box "Use Custom Address for Mapping Search". Select the "Click to Establish Default Address for Mapping Search" link which will set the default location of the map. Upon clicking on this link the Change Address dialog window will open. From this window specify the starting location. Single click any location for exact positioning.



Navigation Controls

The Virtual Earth search page has several advanced navigation controls. The controls found on the screen or via the mouse can be used for quicker navigation. The following is a break down on how to navigate on the Virtual Earth map.

1. **Zoom in and Out:** Virtual Earth has 19 different zoom levels including the zoom slider control found in the upper left hand corner of the mapping screen or by using the mouse wheel. Moving the mouse wheel forward will zoom in; moving the wheel backwards will zoom out.

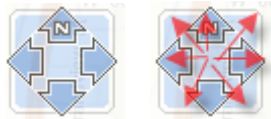


Zooms In



Zooms Out

2. **Navigation:** There are two methods that can be used to navigate within the map. Use the directional control panel or left click and drag the map in the desired direction. To use the control panel left click and hold and move in the desired direction (North, East, South, West).



Left Click and hold. Move mouse in any direction.



Left click and hold to drag the map in any direction.

Map Types

There are three types of map views that can be used in the Virtual Earth™ map. Choose the view using the map controls in the upper left corner of the map search screen. By default the Road map will be displayed.

Road Map: A traditional map that is used in most mapping applications.

Aerial Map: This view will allow the display of satellite images of the map which allows users to zoom in to see a detailed aerial view of the home.

Bird's Eye Map: This is a specialized view that will allow users to see listings from multiple three quarter views when available.



Map Controls



Road View



Aerial View



Bird's Eye View

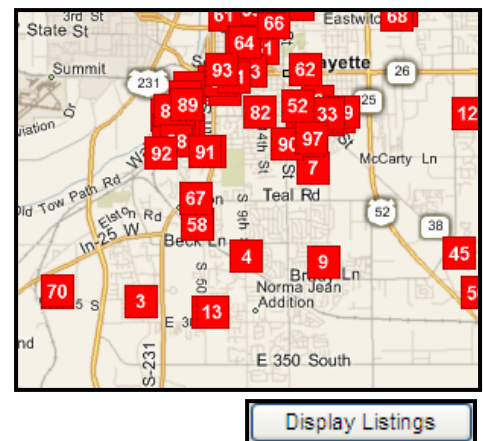
Note: Both the Aerial and Bird's eye view are only available in certain areas. Depending on your MLS's location this feature may or may not be available for use. Also when viewing a map in the Bird's eye format all search options are disabled.

Search Tools

There are four search tabs used to search for listings within the map. Depending on the MLS's settings, listing results will display on the map while searching.

Map Search: The Map Search tab allows you to use your map as a search tool. When you navigate to an area and you are satisfied with the zoom level you can click on the "Display Listings" button to view any matches found. Paragon will refresh the map and show these matches on the map.

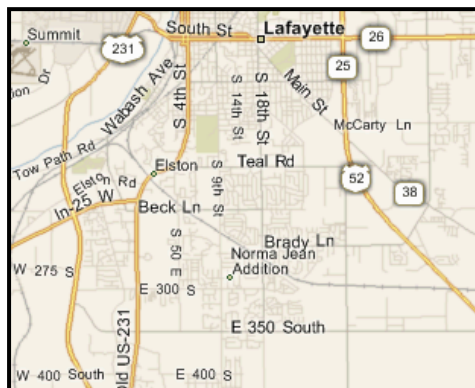
Note: A maximum of 100 listings can be displayed at one time.



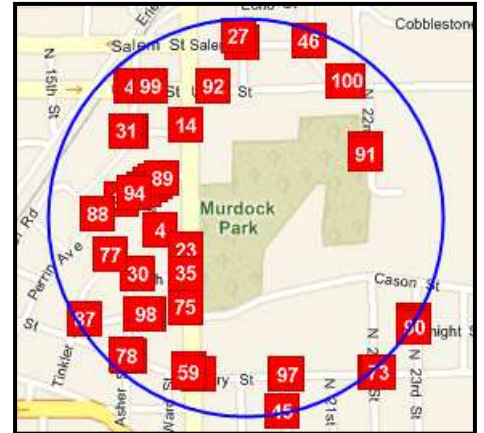
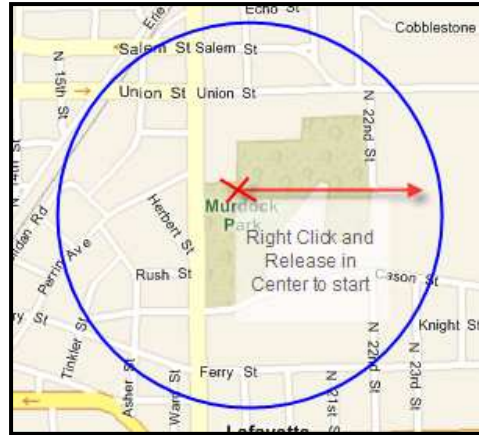
Radius: user to around This mileage and

draw a draw a on any

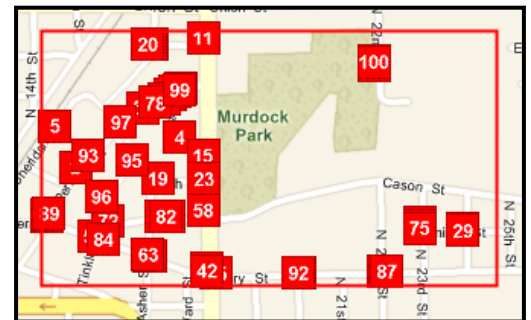
mouse in any direction. Notice a circle will follow your mouse. **Right Click and Release** again to end the circle. Click on the Display Listings button to view any listings found within this circle.



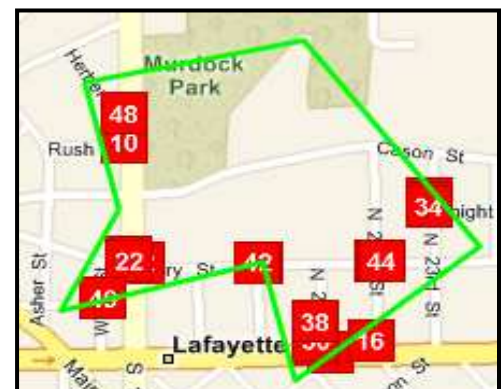
The Radius search allows the search for properties on the map an address or a lat/long point. search is completed by placing a value into the "Radius (mi)" field clicking the Draw Radius button. Alternately, the user can manually radius on the map. To manually radius, **Right Click and Release** point on the map. Move your



Rubber Band: In the Rubber Band search users can draw a rectangular shaped object on the map to locate listings within this shape. To manually draw a Rubber Band, **Right Click and Release** on any point on the map. Move your mouse in any direction. Notice a box will follow your mouse. **Right Click and Release** again to end the box. Click on the Display Listings button to view any listings found within this box.



Polygon: The Polygon search allows users to manually draw any shape on the map to find listings. There are a maximum of 20 points to use on a map to create the Polygon.



To draw a Polygon:

You first must **Right Click and Release** on any point on the map to start your anchor point. Move your mouse in any direction. Notice a green line will follow your mouse. **Right Click and Release** again to set your next point. Notice a solid green line will now appear on the map. Continue in this process until you are satisfied with your object. To close a Polygon you have two methods. You can click on the Finish Polygon button to connect your last point to your first point, or you can manually close it by intersecting a line as show in the first image above. Click on the Display Listings button to view any listings found within this Polygon.

Note: *If you intersect a line at any point while drawing your Polygon your shape will automatically be closed.*

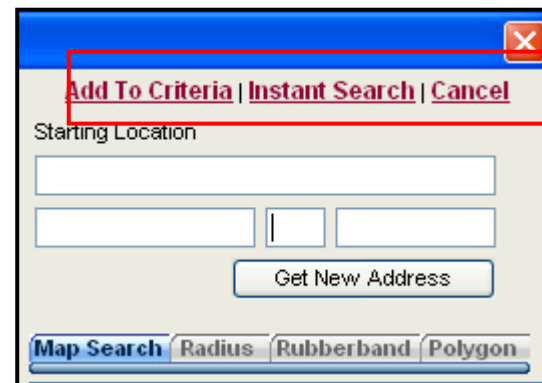
Hovering Over a Number

Summary information can be viewed on a listing found within a map search by hovering over the number. A small popup window will appear displaying a picture, address, Listing Number, Price, Class, and Status.



Map Search Results

Once you are satisfied with your mapping criteria you can either add it to the property search by clicking the Add to Criteria link or go directly to the search results spreadsheet by clicking the Instant Search link. Clicking Cancel will close the map search window and take you back to the property search screen without adding mapping criteria to your search.



Fidelity MLS Systems Division

If you have a suggestion for Tips & Tricks, please email mlsinfo@fnis.com or call 877-657-4357.

© 2007 Fidelity MLS Systems and Solutions. All trademarks are the property of their respective companies.

MLS is a registered trademark in Canada of Canadian Real Estate Association.